

FAST FACTS

1) WHAT IS THE FORNEY MUSEUM?

The Forney Museum is the only transportation museum in Colorado to maintain a collection inclusive of all forms of transportation: trains, automobiles, bicycles, airplanes, carts, carriages, wagons and an occasional combination of more than one mode.

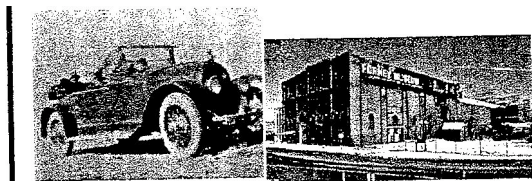
2) WHO IS FORNEY?

J.D. Forney was the inventor of the farm arc welding machine and electric soldering iron. He manufactured these and other items at Forney Industries in Ft. Mr. & Mrs. J. D. Forney Collins, Colorado.



3) MUSEUM BEGINNINGS

J.D.'s wife, Rae, and son, Jack, hoped to relieve him of the cares of business with a gift of a 1921 Kissel car in 1950. J.D. collected the same way he grew a successful business. By 1955 the collection had outgrown the family garage and had moved into a big building at the Industries-and a museum was born. The Forney Museum moved to Denver in 1968. It was housed in the 1901 Denver Tramway Power Plant building for the next 30 years. Now REI.



4) WHO OWNS THE COLLECTION?

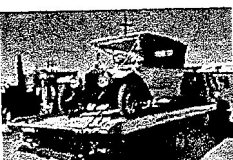
The museum started as a private collection, however it became a non-profit museum in 1961. Under the rules for non-profit organizations, the Museum is the owner of the collection but the Forney family continues to lend active support.

5) **WHY DID THE FORNEY MOVE?** The Museum moved due to structural problems in the old building.

6) **WHEN DID THE MUSEUM MOVE?** The museum started moving in 1998. Reopened on a limited basis on Sept. 1, 2000, the official opening at its new address, (4303 Brighton Blvd.,) was in January 2001.

7) DID EVERYTHING GET MOVED?

All of the vehicles that belonged to the Forney Museum were moved but not all the vehicles on display at the old location belonged to the Forney Museum.



8) IS EVERYTHING ON DISPLAY?

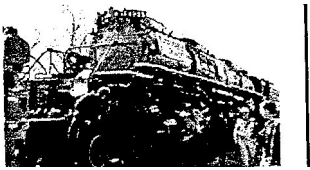
No. Another 40-60 vehicles in storage

and the majority of our historical wax figures are in storage. Not everything in storage is museum display quality. We try to rotate out pieces of the collection, so check back soon to see something new.

9) IS YOUR NEW LOCATION SMALLER?

The Forney display space is almost the same size as the old location but our storage space doubled.

10) **HOW DID THE FORNEY MOVE THE BIG BOY?** The Big Boy was moved on portable track at a walking pace, pulled by a large tow truck and, later, a diesel engine. Please ask to see photos at the front desk.



11) HOW DID THE MUSEUM ACQUIRE A BIG BOY LOCOMOTIVE?

Big Boy was donated to the Museum from Union Pacific in 1969.

